

Precompressed Spring Hanger 25 mm Standard Deflection

1. Compliance:

- 1.1 Designed to BS 1726 -1 : 1987
- 1.2 Tolerance to BS 1726-1 : 2002
- 1.3 SAE and Ashrae Guidelines for Vibration Isolation

2. Application:

Suspension of water pipe lines and seismically restrained rotating equipments.

3. Product Features:

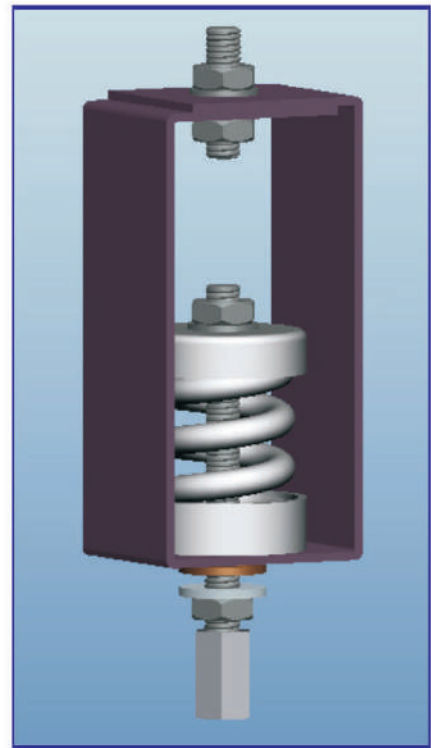
- 3.1 Spring diameter to height ratios are designed to ensure that spring will never buckle even when fully loaded.
 - 3.2 Suspension rod misalignment (30 degree arc) is compensated in hanger design.
 - 3.3 Direct connection to lower suspension rod by means of a threaded rod coupler.
 - 3.4 Printed deflection scale to indicate total spring deflection.
 - 3.5 Pre compressed spring effectively minimizes transfer of variations in pipe load during filling of pipes thus protecting equipment connections / flexible joints and also prevents overloading of the main equipment isolators.
 - 3.6 Locking rubber bush centralizes the spring and prevents dislocation.
 - 3.7 Springs are powder coated with appropriate color coding to facilitate identification.
 - 3.8 Frame is made of G.I. steel and powder coated to 100 microns paint thickness (exceeds 1000 hours of salt spray test) and conforming to ASTM B-117.
- Option:
- 1) Frame Hot Dip Galvanised (Prefix Part Number with "HDG")
 - 2) Spring Neoprene Coated (Prefix Part Number with "N")
 - 3) Spring Plastic Coated (Prefix Part Number with "P")

4. Selection / Ordering:

Point load (Calculated to include all variables such as weight of water in pipe lines etc if applicable).

5. Installation Guide lines:

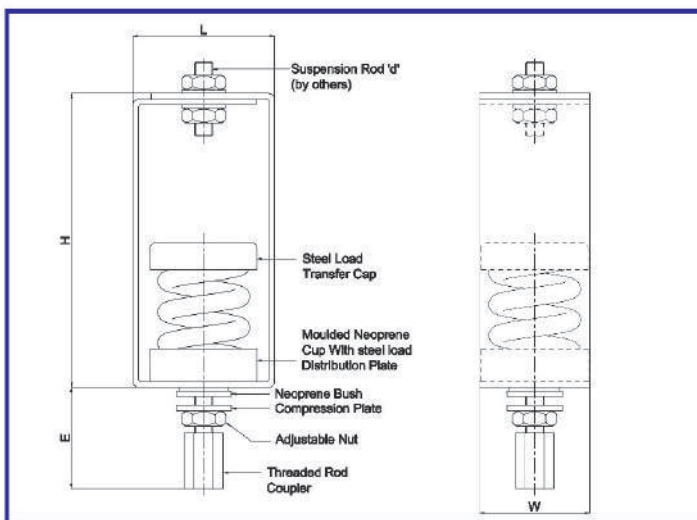
Included in packaging.



SELECTION TABLE FOR 25 MM DEFLECTION PRECOMPRESSED SPRING HANGERS (Table No: C-13-01)

Isolator Model	Rated Load (kg)	Spring Colours	Dimension (mm)				
			L	W	H	E(apprx.)	d
SPCSH-A25	25	Green	77	60	120	68	M10
SPCSH-A50	50	Black					
SPCSH-A75	75	Yellow					
SPCSH-A100	100	Blue	77	60	120	75	M10
SPCSH-A150	150	Grey					
SPCSH-A200	200	Orange					
SPCSH-B200	200	Black	77	60	145	85	M12
SPCSH-B250	250	Yellow					
SPCSH-B300	300	Blue					
SPCSH-B400	400	Grey	94	80	180	115	M16
SPCSH-C400	400	Brown					
SPCSH-C500	500	Grey					
SPCSH-C600	600	Orange	94	80	220	145	M22
SPCSH-C700	700	Green					
SPCSH-C800	800	Pink					
SPCSH-C1000	1000	White	235	75	325	175	M30
SPCSH-C1200	1200	Purple					
SPCSH-2C1400	1400	Green					
SPCSH-2C1600	1600	Pink	235	75	350	190	M36
SPCSH-2C2000	2000	White					
SPCSH-2C2400	2400	Purple					
SPCSH-2C2800	2800	Purple/Yellow	235	75	350	190	M36
SPCSH-2C3200	3200	Purple/White					

Precompressed Spring Hanger 25 mm Standard Deflection



Note:

- Due to policy of continual improvement, the specifications are subject to change without prior notice.
- Measurements are subject to 5% tolerance.
- To achieve good sound suppression, do not overload fitting.



Precompressed Spring Hanger 50 mm Standard Deflection

1. Compliance:

- 1.1 Designed to BS 1726 -1 : 1987
- 1.2 Tolerance to BS 1726-1 : 2002
- 1.3 SAE and Ashrae Guidelines for Vibration Isolation

2. Application:

Suspension of water pipe lines and seismically restrained rotating equipments.

3. Product Features:

- 3.1 Spring diameter to height ratios are designed to ensure that spring will never buckle even when fully loaded.
- 3.2 Suspension rod misalignment (30 degree arc) is compensated in hanger design.
- 3.3 Direct connection to lower suspension rod by means of a threaded rod coupler.
- 3.4 Printed deflection scale to indicate total spring deflection.
- 3.5 Pre compressed spring effectively minimizes transfer of variations in pipe load during filling of pipes thus protecting equipment connections / flexible joints and also prevents overloading of the main equipment isolators.
- 3.6 Locking rubber bush centralizes the spring and prevents dislocation.
- 3.7 Springs are powder coated with appropriate color coding to facilitate identification.
- 3.8 Frame is made of G.I. steel and powder coated to 100 microns paint thickness (exceeds 1000 hours of salt spray test) and conforming to ASTM B-117.

Options:

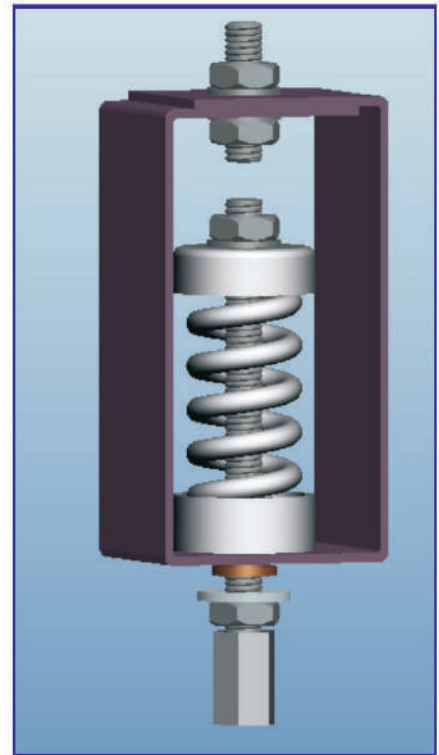
- 1) Frame Hot Dip Galvanised (Prefix Part Number with "HDG")
- 2) Spring Neoprene Coated (Prefix Part Number with "N")
- 3) Spring Plastic Coated (Prefix Part Number with "P")

4. Selection / Ordering:

Point load (Calculated to include all variables such as weight of water in pipe lines etc if applicable).

5. Installation Guide lines:

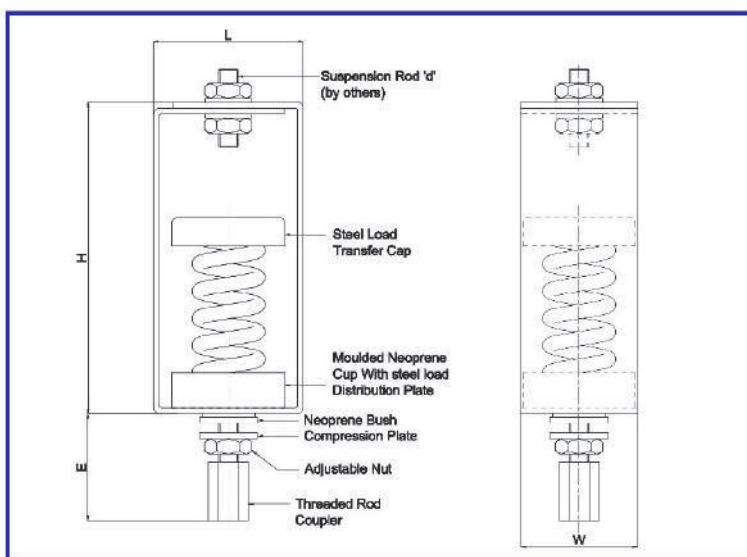
Included in packaging.



SELECTION TABLE FOR 50 MM DEFLECTION PRECOMPRESSED SPRING HANGERS (Table No: C-15-01)

Isolator Model	Rated Load (kg)	Spring Colours	Dimension (mm)				
			L	W	H	E(apprx.)	d
SPCSH50-B25	25	Green	77	60	170	100	M12
SPCSH50-B50	50	Red					
SPCSH50-B75	75	Black					
SPCSH50-B100	100	Yellow					
SPCSH50-B150	150	Blue					
SPCSH50-C200	200	Green	94	80	200	115	M16
SPCSH50-C250	250	Red					
SPCSH50-C300	300	Black					
SPCSH50-C400	400	Yellow					
SPCSH50-C500	500	Black/Green					
SPCSH50-C600	600	Yellow/Green	107	95	240	130	M20
SPCSH50-G700	700	Black					
SPCSH50-G800	800	Yellow					
SPCSH50-G1000	1000	Blue					
SPCSH50-G1200	1200	Blue/Green					
SPCSH50-G1400	1400	Blue/Brown	107	95	260	145	M24
SPCSH50-2G1600	1600	Yellow					
SPCSH50-2G2000	2000	Blue	260	100	360	175	M30
SPCSH50-2G2400	2400	Blue/Green					
SPCSH50-2G2800	2800	Blue/Brown	260	100	385	190	M36

Precompressed Spring Hanger 50 mm Standard Deflection



Note:

- Due to policy of continual improvement, the specifications are subject to change without prior notice.
- Measurements are subject to 5% tolerance.
- To achieve good sound suppression, do not overload fitting.

