

Open Spring Mounts - Rubber Based 25 mm Standard Deflection

1. Compliance:

- 1.1 Designed to BS 1726 -1 : 1987
- 1.2 Tolerance to BS 1726-1 : 2002
- 1.3 SAE and Ashrae Guidelines for Vibration Isolation

2. Application:

Centrifugal axial fans, Air Handling Units, small compressors.

3. Product Features:

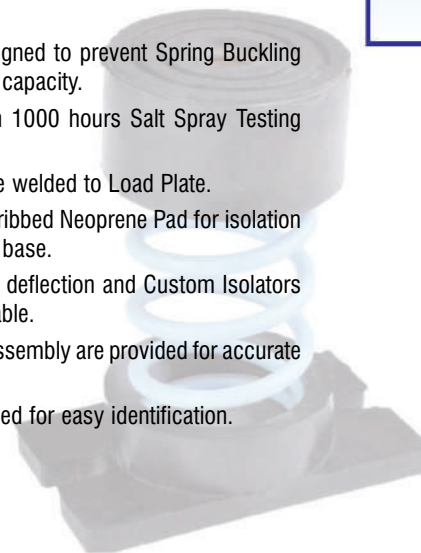
- 3.1 Laterally Stable Springs are designed to prevent Spring Buckling and capable of 50% overloading capacity.
- 3.2 Springs are powder coated with 1000 hours Salt Spray Testing conforming to ASTM B-117.
- 3.3 In heavier capacities, Springs are welded to Load Plate.
- 3.4 Bottom Plates are made of thick ribbed Neoprene Pad for isolation of noise / vibration and non skid base.
- 3.5 Standard Product Range upto 2" deflection and Custom Isolators with higher deflections are available.
- 3.6 Upper Load Plate and Levelling Assembly are provided for accurate Leveling.
- 3.7 Colour Coded Springs are provided for easy identification.

4. Selection / Ordering:

Static Load

5. Installation Guide lines:

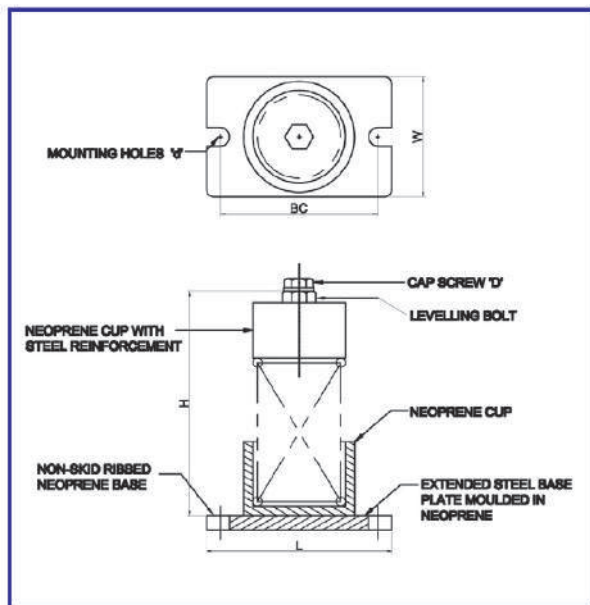
Included in packing.



SELECTION TABLE FOR 25 MM DEFLECTION OPEN SPRING MOUNTS (Table No: C-24-01)

Isolator Model	Rated Load (kg)	Colour Code	Dimensions (mm)					
			L	W	H*	BC	D	d
SOSM-A25	25	Green	86	56	110	73	M10	M8
SOSM-A50	50	Black						
SOSM-A75	75	Yellow						
SOSM-A100	100	Blue	86	56	118	73	M10	M8
SOSM-A150	150	Grey						
SOSM-A200	200	Orange						
SOSM-B200	200	Black	100	65	124	85	M10	M10
SOSM-B250	250	Yellow						
SOSM-B300	300	Blue						
SOSM-B400	400	Grey						
SOSM-C400	400	Brown	130	76	132	110	M12	M12
SOSM-C500	500	Grey						
SOSM-C600	600	Orange						
SOSM-C700	700	Green	130	76	138	110	M12	M12
SOSM-C800	800	Pink						
SOSM-C1000	1000	White						
SOSM-C1200	1200	Purple						
SOSM-C1400	1400	Purple/Yellow						
SOSM-C1600	1600	Purple/White						

* Represents average free height in each grouping of Models. Height of some models in group may vary slightly from this figure.



Note:

- Due to policy of continual improvement, the specifications are subject to change without prior notice.
- Measurements are subject to 5% tolerance.
- To achieve good sound suppression, do not overload fitting.

