

Duct Mount

1. Compliance:

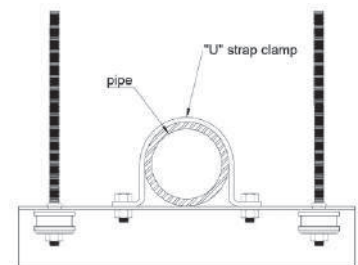
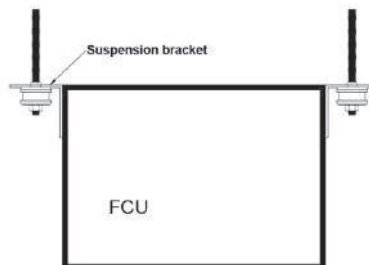
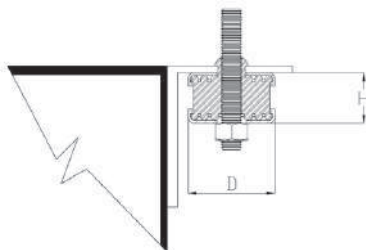
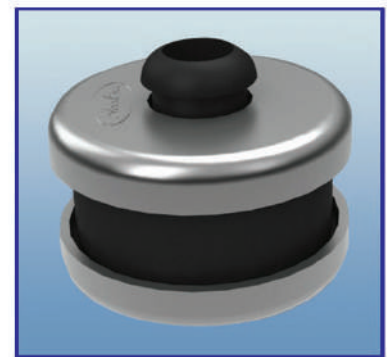
British Standards, BS 3974 : Part I

2. Application:

To control transmission of noise to the building structure, OnTides Duct Mounts serve as acoustic separators between sources of high frequency vibration and their suspension rods. Some example applications are illustrated below.

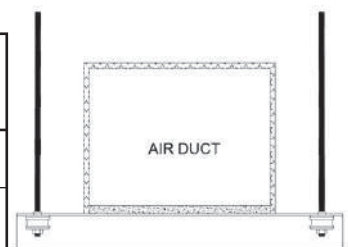
3. Product Features:

- 3.1 Resilient rubber grommet with steel load distribution cups and extended sleeve, designed to reduce transmission of structure born noise from air ducts and suspended equipments / small pipes.
- 3.2 Supplied complete with top and bottom steel load distribution cups, electrogalvanised after manufacture for maximum corrosion resistance.
- 3.3 Extended sleeve of rubber element prevents metal to metal contact between suspension rod and suspension bracket / trapeze channel.
- 3.4 Available in two different sizes to suit width of duct / equipment suspension channel.
- 3.5 Colour coded for identification of Capacity.



SELECTION TABLE - DUCT MOUNT (Table No: C-30-01)

Isolator Model	Colour Code	Capacity Kg (7.5mm deflection)	Dimensions (mm)		Recommended Suspension Rod
			H	D	
SDM-L		30	26	32	M8
SDM-A1	Green	50	26	44	M8
SDM-A2	Red	100	26	44	M10



Note:

- Due to policy of continual improvement, the specifications are subject to change without prior notice.
- Measurements are subject to 5% tolerance.
- To achieve good sound suppression, do not overload fitting.